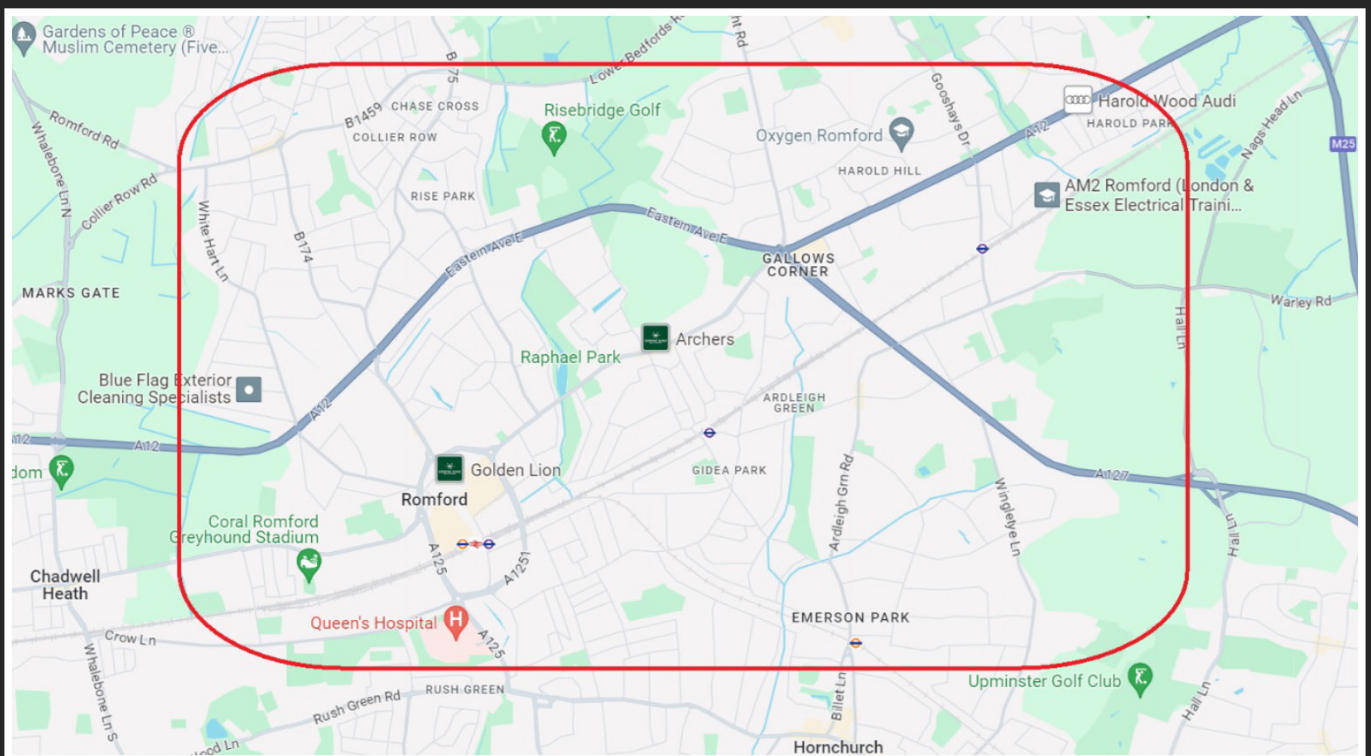


## NEW REQUIREMENT | ROMFORD

### Industrial Warehouse with secure yard and parking Or existing car servicing facility



#### DESCRIPTION:

Modern industrial warehouse for use as a car workshop.

Existing building preferred.

Ideally self-contained / standalone.

Will also consider a purpose-built car dealership.

#### LOCATION:

Romford ideally close to established motor retail areas.

#### SIZE:

10,000-15,000 sq ft.

#### TENURE:

Freehold preferred but will consider leasehold options.

#### TIMING:

Immediate.

Please send all suitable opportunities to:

**Andrew Ilsley | 07717 292210 | [andrew@latitudere.co.uk](mailto:andrew@latitudere.co.uk)**